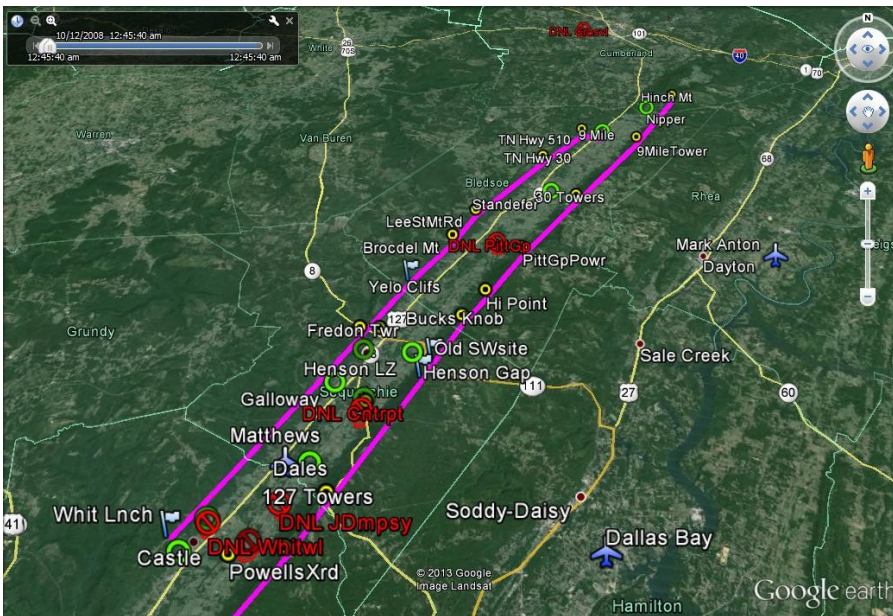




Site info for the Sequatchie Valley: TTT & Dunlap GPS Data Files

For additional common TTT route waypoints, more information on all waypoints, and greater waypoint data accuracy (most confirmed on site), download one of the "TTTWaypoints&DNL*.*)" files from the TTT website at www.tennesseetreetoppers.org.

For terrestrial travels, the "Dunlap*.*)" files offer *accurate* coordinates and other information (phone, address, website, etc.) for most of the "points of interest" likely to interest you in *The Hang Gliding Capital of the East!*



GPS Files

<http://www.tennesseetreetoppers.org>

[TTTWaypoints&DNL.gdb](#) - MapSource file for Garmin devices.

[TTTWaypoints&DNL.gpx](#) - generic file for any device.

[TTTWaypoints&DNL.kml](#) - Google Earth file.

[TTTWaypoints&DNLcolor.gdb](#) - MapSource file for Garmin color devices with DNLs outlined in red.

All files include popular routes!

For terrestrial navigation:

[Dunlap.gdb](#) - MapSource file for Garmin devices.

[Dunlap.gpx](#) - generic file for any device.

[Dunlap.kml](#) - Google Earth file.

